

### **Supplementary Figure legends**

**Figure S1.** 10x8mm sized intraocular mass within the anterior uvea which extended posteriorly was found in an ocular ultrasound examination.

**Figure S2.** Dorsal postcontrast CT imaging. The contrast enhancing mass extending from ciliary body into the anterior and vitreous chamber was found which confirmed the suspicion based on ocular ultrasound of a mass extending along the anterior and posterior uvea.

**Figure S3.** Clinical appearance two weeks after the end of chemotherapy, the facial deformation secondary to the mass had resolved.

**Figure S4.** Transverse postcontrast CT imaging following chemotherapy: hyperintense/mineralization present at the level of the sclera, lens displaced in the globe, phthisis bulbi of the globe, contrast enhancing mass effect is no longer present.

Figure S1.

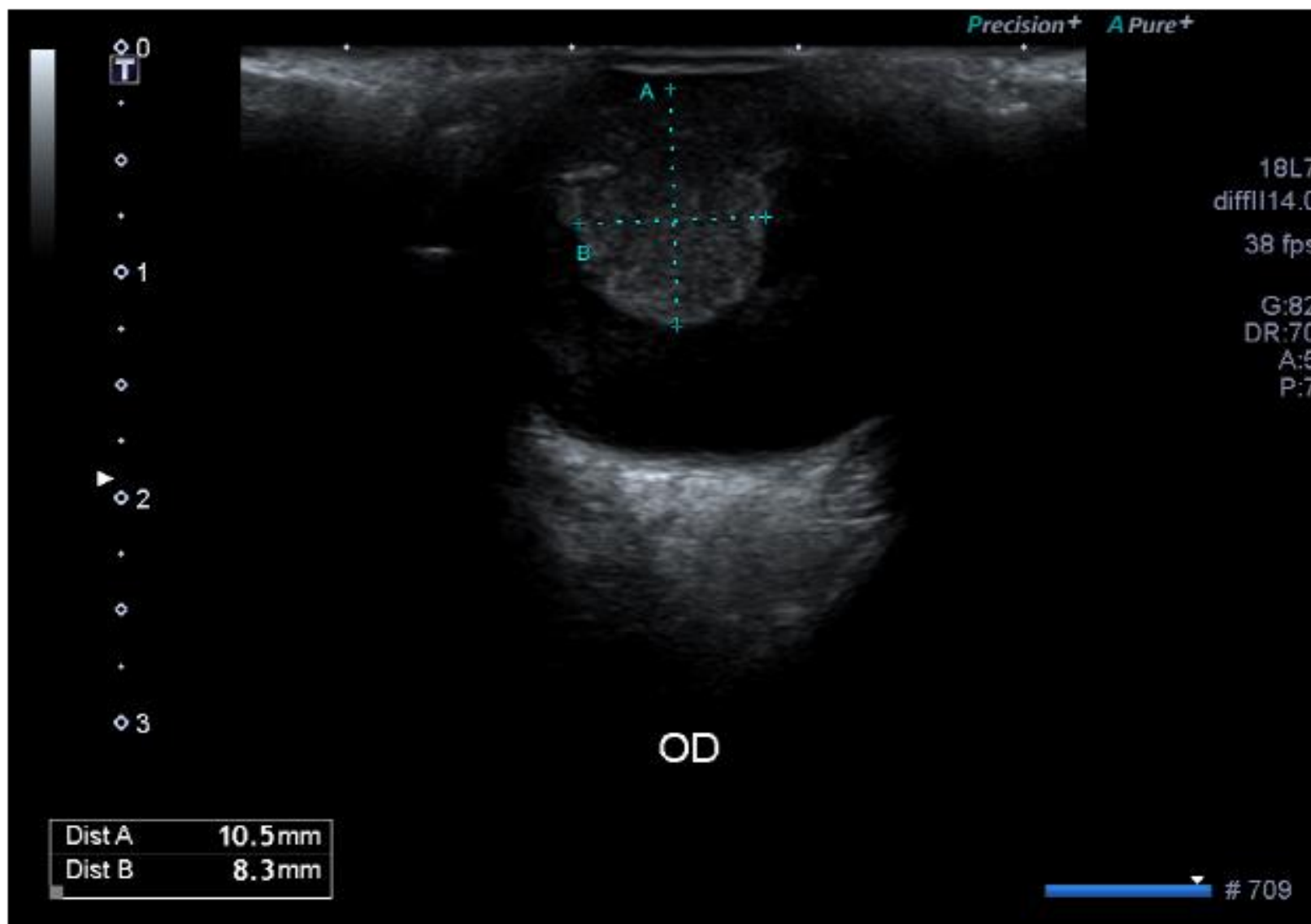


Figure S2.



Figure S3.



Figure S4.

