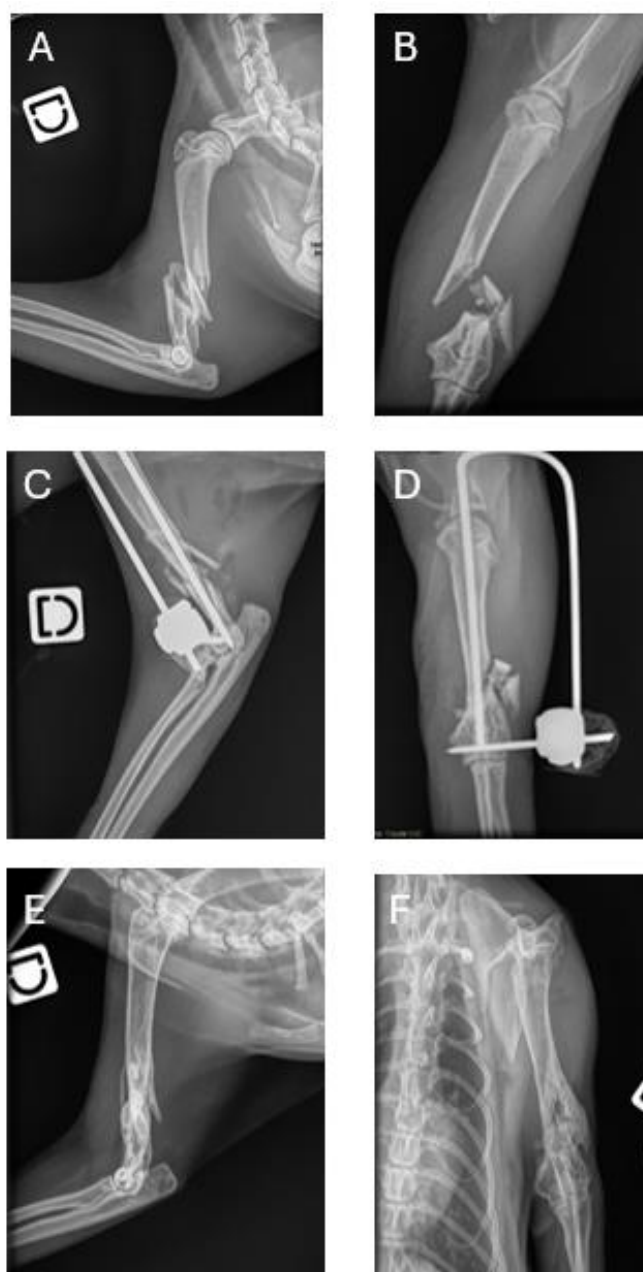


1 **SUPPLEMENTARY MATERIAL**

2



3

4 **Figure S1.** Radiographic views of a feline humerus before and after surgery (case 1)

5 Images were acquired with the animal under general anesthesia in lateral and dorsal recumbency.

6 Preoperative radiographs (A, B) show a closed, distal diaphyseal, comminuted, and severely displaced

7 fracture of the right humerus. Immediate postoperative radiographs (C, D) demonstrate appropriate

8 alignment, although multiple small bone fragments remain adjacent to the fracture line. At 6 wk
9 postoperatively, radiographs (E, F) confirm complete bone healing.

10 ^A Immediate preoperative radiograph (latero-medial view)

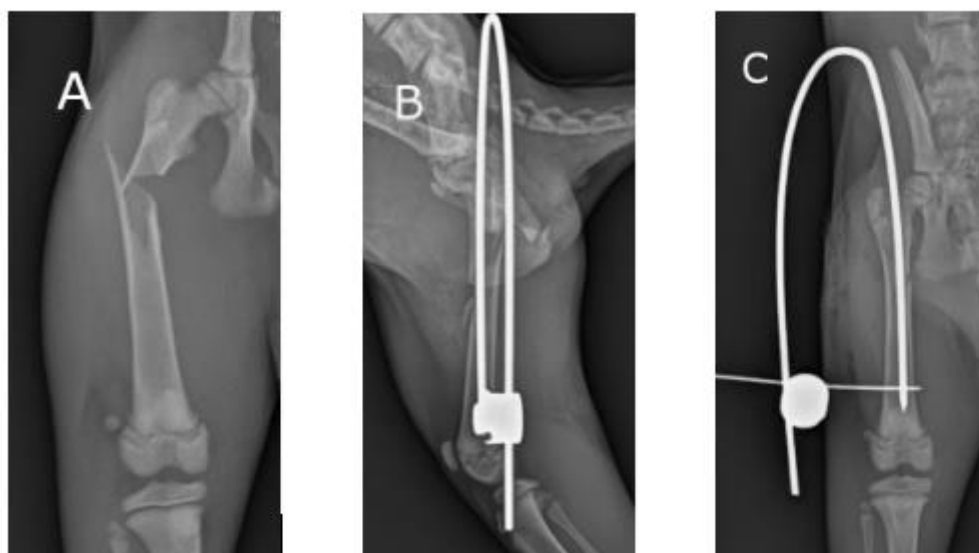
11 ^B Immediate preoperative radiograph (cranio-caudal view)

12 ^C Immediate postoperative radiograph (latero-medial view)

13 ^D Immediate preoperative radiograph (cranio-caudal view)

14 ^E 6 weeks postoperative radiograph after implant removal (latero-medial view)

15 ^F 6 weeks postoperative radiograph after implant removal (cranio-caudal view)



16

17

18 **Figure S2.** Radiographic views of a feline femur before and immediately after surgery
19 (case 3).

20 Images were acquired with the animal under general anesthesia in lateral and dorsal recumbency. The
21 immediate preoperative radiograph (A) shows a closed, mid-diaphyseal, short oblique, and moderately
22 displaced fracture of the left femur. Immediate postoperative radiographs (B, C) demonstrate
23 appropriate alignment and satisfactory reduction.

24

25 ^A Immediate preoperative radiograph (cranio-caudal view)

26 ^B Immediate postoperative radiograph (latero-medial view)

27 ^C Immediate postoperative radiograph (cranio-caudal view)

28

29