

Supplementary Material



Figure S1: The SILS Port (Covidien®) device is a flexible soft-foam port. The device contains an insufflation / smoke evacuation tubing and stopcock, and it is suitable for use with instrumentation ranging from 5 mm – 12 mm.

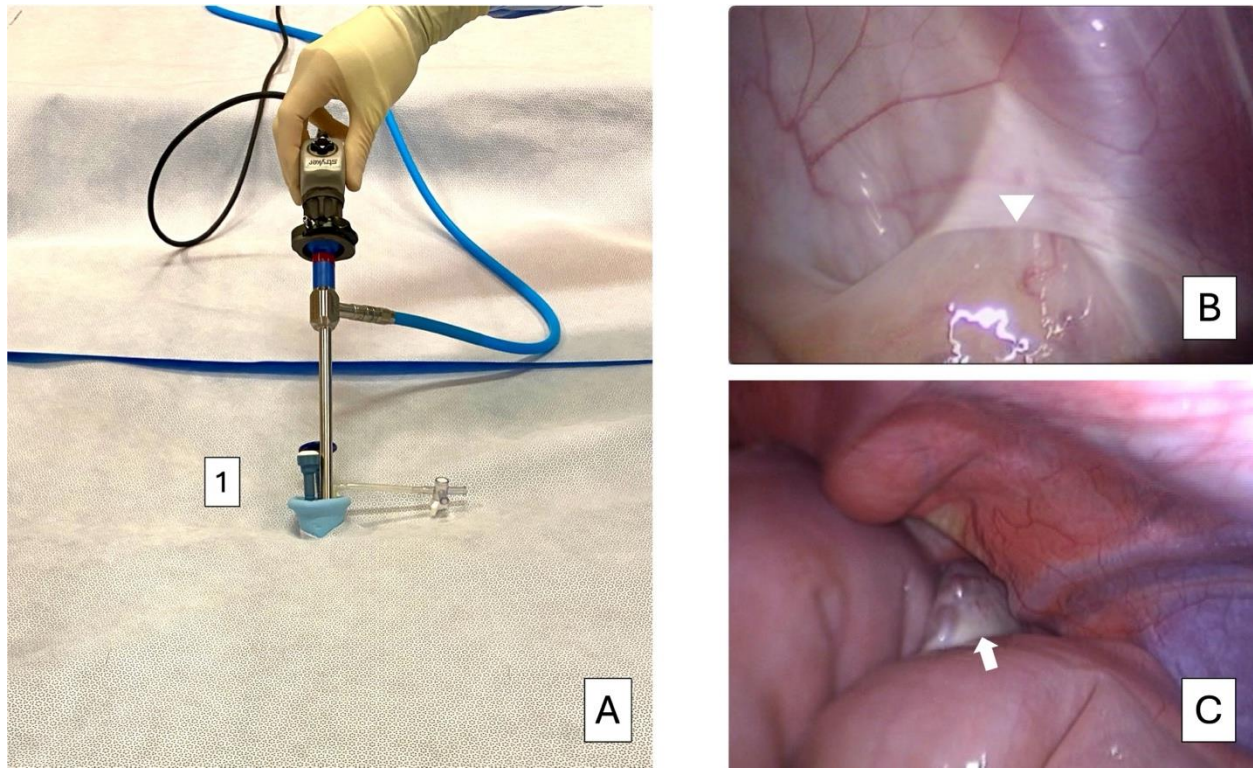


Figure S2: A. The image depicts a surgical model with a 10 mm diameter, 30°, 37 cm length rigid laparoscope inserted through one of the three channels of the SILS port device. B. A laparoscopic view of the inguinal region highlighting the internal inguinal ring (white arrowhead). C. A laparoscopic view of the inguinal region showing the intra-abdominal testicle (white arrow).

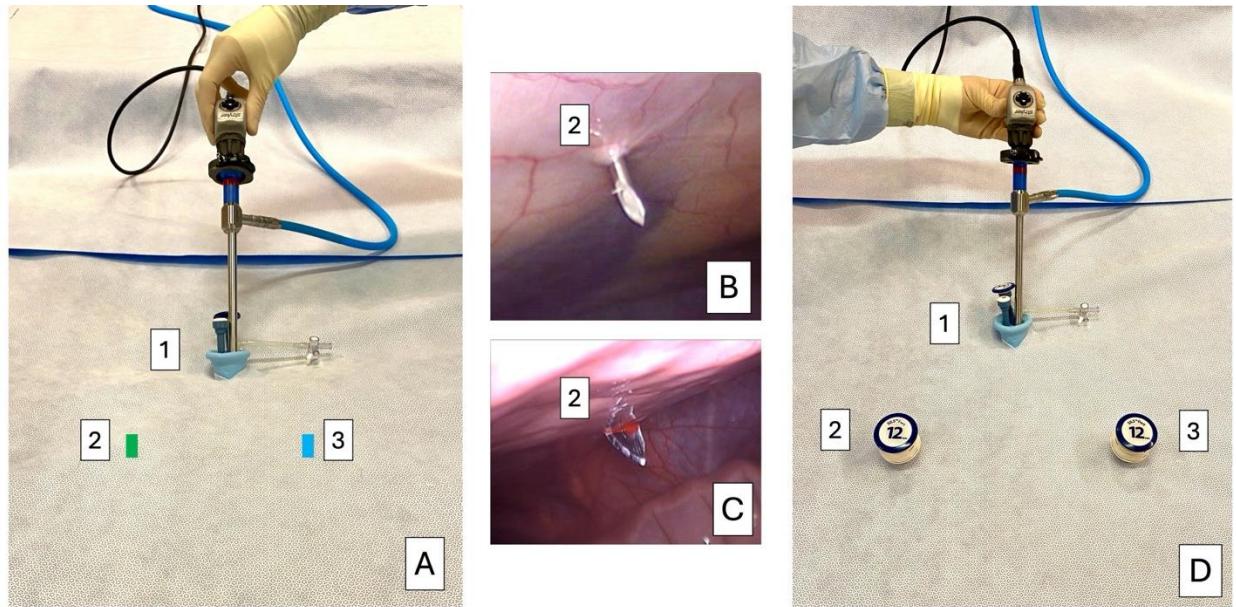


Figure S3: A. The image shows a surgical model with a 10 mm diameter, 30°, 37 cm length rigid laparoscope inserted through one of the three channels of the SILS port device (1), along with the locations of the right (2) and left (3) para-inguinal incisions. B. An intraoperative image of the spinal needle being inserted to determine the location of the right para-inguinal portal (2). C. An intraoperative image demonstrating the stab incision made into the abdomen to create the right para-inguinal portal (2). D. The final image of the surgical model showing the laparoscope through the SILS port device (1), with laparoscopic cannulas in the right (2) and left (3) para-inguinal portals.

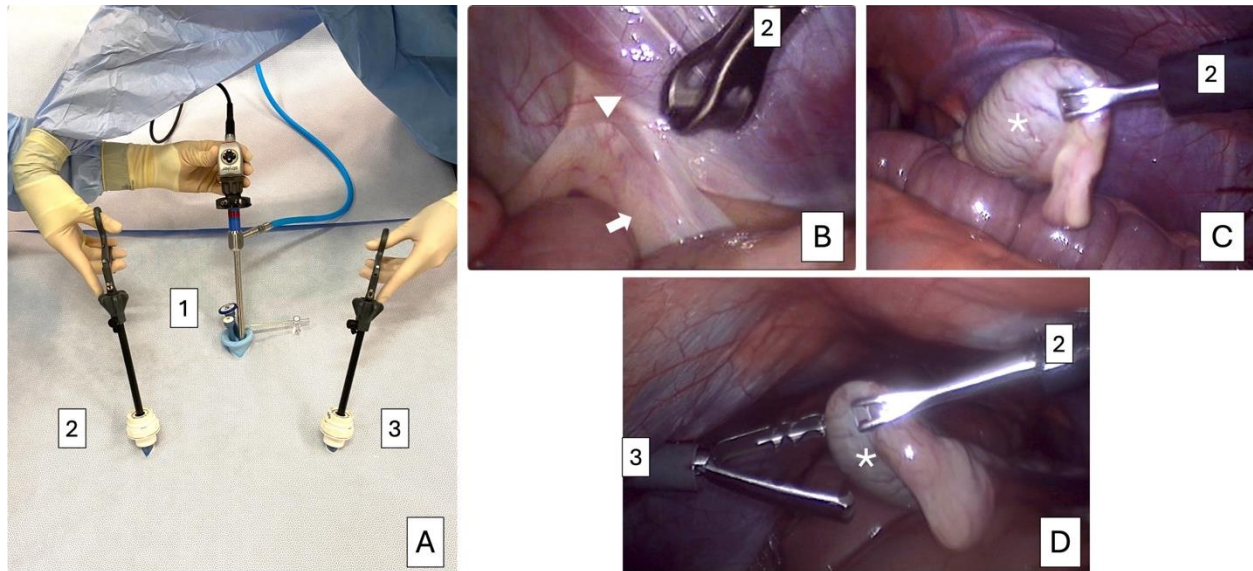


Figure S4: A. The image shows a surgical model with a 10 mm diameter, 30°, 37 cm length rigid laparoscope inserted through one of the three channels of the SILS port device (1), along with Babcock forceps inserted through the right (2) para-inguinal portal and grasping forceps through the left (3) para-inguinal portal. B. An intraoperative image showing the Babcock forceps through the right (2) para-inguinal portal, along with the right inguinal ring (white arrowhead) and spermatic cord (white arrow). C. An intraoperative image showing the Babcock forceps through the right (2) para-inguinal portal grasping the right testicle (white asterisk). D. An intraoperative image showing the Babcock forceps through the right (2) para-inguinal portal transferring the right testicle (white asterisk) to the traumatic grasping forceps through the left (3) para-inguinal portal.