

One column width: 3.5 inches
DPI: 300

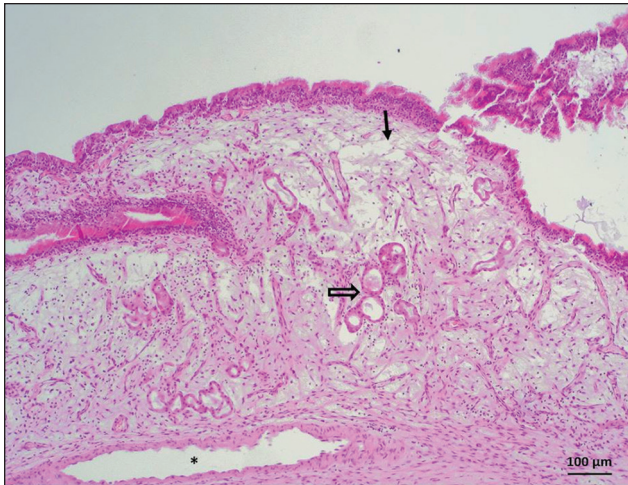


Figure 1. Histological appearance of canine nasal polyposis (Case 1). Exophytic mass is covered by respiratory epithelium that is either hyperplastic or exhibiting squamous metaplasia. The stroma is generally edematous and myxoid (arrow) with scant fibrils and surrounded by tortuous and ectatic nasal glands (empty arrow), which are present in highly variable quantities. In the lamina propria, mixed inflammatory infiltrates and dilation of the vascular system (*) are present. Hematoxylin and eosin, 100× magnification.